



I N T E R N A T I O N A L

We specialize in designing and producing expertly engineered portable bars, hostess stations, valet podiums, and security stations.



I N T E R N A T I O N A L



ThePortableBarCompany.com

Folding Bars on Wheels
Customizable Modular Portable Bars
Draft Equipment



TheValetSpot.com

Steel Valet Podiums
Key Boxes and other Valet Accessories



TheSecurityStation.com

Steel Security Desks
Security Accessories



TheHostessStation.com

Steel Hostess Stands
LED Signage

CONTENTS

FOLDING BARS ON WHEELS

Powder Coat Frames	6
Rustic Clear Coat Frames	8
Stainless Steel Frame	10
Gallery	14

CUSTOMIZABLE MODULAR PORTABLE BARS

Flash Bar Segments	22
Flash Bar Accessories	26
NSF Flash Bar	28
Gallery	30

STEEL HOSTESS STANDS

Hostess Stands	36
LED Signage	42
Gallery	44

STEEL VALET PODIUMS

Valet Podiums	48
Podium Locks	51
Custom Podiums	52
Podium Signage	53
Keyboxes	54

STEEL SECURITY DESKS

Security Podiums	58
------------------	----

CONTACT US

60



SPACE-SAVING

All our Fold and Roll portable bars break down quickly, saving you valuable storage space. They're all on plated casters and roll easily for transport.



POWDER COAT FRAMES & CUSTOMIZABLE PANELS



FOLD & ROLL BACK BAR

These models are available with black or white powder coat frames for a tailored uniformed look.



PROFESSIONAL BAR



STANDARD BAR



COMPACT BAR



PROFESSIONAL BAR
CURVED COUNTER



NEW
HEAVY-DUTY PORTABLE BAR

* Most bars are shown with white acrylic panels.

There are 800+ custom panel options available including LED lighting, custom printing for branding, and WilsonArt laminates for wood or stone looks.

STAINLESS STEEL FRAME & CUSTOMIZABLE PANELS

The frame is made entirely of 304 Stainless Steel.



NEW
STAINLESS STEEL
FOLD & ROLL BACK BAR



NEW
CURVED COUNTER
STAINLESS STEEL
HEAVY-DUTY BAR



STAINLESS STEEL
HEAVY-DUTY BAR



RUSTIC
PROFESSIONAL BAR



RUSTIC
COMPACT BAR

RUSTIC CLEAR COAT FRAMES

These models are available with clear coat frames so you can see the unique distressed steel for a rustic look that patinas over time. Indoor use only.



The Portable Bar Company is the preferred beverage sales equipment solution for bartenders, event spaces, hotels, brands and many more. Our products are specifically designed to meet the rugged requirements of the food and beverage industry. We have two bar lines: our Fold & Roll product line and modular Flash Bar product line.





PROFESSIONAL BAR CURVED COUNTER

Folds to 16.5" in 5 minutes

FEATURES

- Available in white or black powder coat frame
- Heavy-duty steel construction
- Interchangeable Panels - Translucent white acrylic, colored acrylic, custom graphics or laminates
- Folds down to 16.5"
- 5 Minute set up time
- Curved bar counter top
- Foldable grid shelving underneath
- 2 Ice bins, 2 Cutting boards, Speed rail, Cup rack, Paper towel rack, and Knife holder
- Optional LEDs
- Cover (Folded) Included

DIMENSIONS & WEIGHT

Open: 84" Wide x 48.5" Tall x 48" Deep
 Folded: 84" Wide x 60" Tall x 16.5" Deep
 Weight: 290 lbs
 Caster: 3"

OPTIONAL UPGRADES

- LED Lighting is Available for all Panel Upgrades
 - LEDs come with 8 color options & remote
 - Optional rechargeable battery lasts 6 hours
- Panel Options
 - Colored acrylic back panel
 - Vinyl printing for the front, sides and/or back panels
 - Custom laminate panels front, sides and/or back panels
- Cover (Assembled)
- Self Contained Sink (Room temp / Hot & Room Temp)



PROFESSIONAL PORTABLE BAR

Folds to 16.5" in 5 minutes

FEATURES

- Available in white or black powder coat frame
- Heavy-duty steel construction
- Interchangeable Panels - Translucent white acrylic, colored acrylic, custom graphics or laminates
- Elongated panels hide casters from view
- Folds down to 16.5"
- 5 Minute set up time
- Upscale counter design
- Foldable grid shelving underneath
- 2 Ice bins, 2 Cutting boards, Speed rail, Cup rack, Paper towel rack, Rag holder, and Knife holder
- Optional LEDs
- Cover (Folded) Included

DIMENSIONS & WEIGHT

Open: 65" Wide x 48.5" Tall x 35.5" Deep
 Folded: 66" Wide x 60" Tall x 16.5" Deep
 Weight: 270 lbs
 Caster: 3"

OPTIONAL UPGRADES

- LED Lighting is Available for all Panel Upgrades
 - LEDs come with 8 color options & remote
 - Optional rechargeable battery lasts 6 hours
- Panel Options
 - Colored acrylic back panel
 - Vinyl printing for the front, sides and/or back panels
 - Custom laminate panels front, sides and/or back panels
- Cover (Assembled)
- Self Contained Sink (Room temp / Hot & Room Temp)
- Sneeze Guard



STANDARD PORTABLE BAR

Folds to 13" in 2 minutes (No tools)

FEATURES

- Available in white or black powder coat frame
- Heavy duty steel construction
- Interchangeable Panels - Translucent white acrylic, colored acrylic, custom graphics or laminates
- Elongated panels hide casters from view
- Folds down to 13"
- 2 minute set up time
- Optional LEDs
- Customizable Panels are detachable for easy transportation
- Cover (Folded) Included

DIMENSIONS & WEIGHT

Open: 63.5" Wide x 49.5" Tall x 35" Deep
 Folded: 68" Wide x 51.5" Tall x 13" Deep
 Weight: 170 lbs
 Caster: 3"

OPTIONAL UPGRADES

- LED External Lighting is Available for Translucent White Acrylic
 - LEDs come with 8 color options & remote
 - Optional rechargeable battery lasts 6 hours
- Panel Options
 - Colored acrylic back panel
 - Vinyl printing for the front, sides and/or back panels
 - Custom laminate panels front, sides and/or back panels
- Stainless Steel Ice Bin



COMPACT PORTABLE BAR

Folds to 7.5" in less than 2 minutes (No tools)

FEATURES

- Available in white or black powder coat frame
- Durable steel construction
- Interchangeable Panels - Translucent white acrylic, colored acrylic, custom graphics or laminates
- Casters hidden from view
- Folds down to 7.5"
- Sets up in less than 2 minutes
- Optional LEDs
- Weighs only 70 lbs
- Foldable Shelving
- Cover (Folded) Included

DIMENSIONS & WEIGHT

Open: 39.5" Wide x 50" Tall x 24.5" Deep
 Folded: 32.5" Wide x 51" Tall x 7.5" Deep
 Weight: 70 lbs
 Caster: 3"

OPTIONAL UPGRADES

- LED External Lighting is Available for Translucent White Acrylic
 - LEDs come with 8 color options & remote
 - Optional rechargeable battery lasts 6 hours
- Panel Options
 - Colored acrylic back panel
 - Vinyl printing for the front, sides and/or back panels
 - Custom laminate panels front, sides and/or back panels





FOLD & ROLL BACK BAR

Folds to 27.5" in 8 minutes

FEATURES

- Heavy-duty steel frame with protective powder coat available in: white, black
- Interchangeable Panels - Translucent white acrylic, black acrylic, custom graphics or laminates
- Two upper display shelves
- Lower storage cabinet
- Three removable cutting boards
- Two ice bins (interchangeable with the center cutting board) 30 lb ice capacity per bin
- Six heavy duty lockable 4" thermo rubber plated casters
- Two removable, swinging, lockable doors
- Covers (for folded and assembled positions).
- Optional remote controlled LED shelf lighting for upper display
- Optional remote controlled LED kit for backlighting the lower cabinet
- Optional rechargeable 8-hour battery for LEDs

DIMENSIONS & WEIGHT

Open: 68" Wide x 81" Tall x 31" Deep
 Folded: 68" Wide x 52" Tall x 27.5" Deep
 Weight: 350 lbs
 Caster: 4"



OPTIONAL UPGRADES

- Remote controlled LED shelf lighting for upper display
 - LEDs come with 8 color options & remote
 - Optional rechargeable battery lasts 6 hours
- Remote controlled LED kit for backlighting the lower cabinet
- Panel Options
 - Colored acrylic back panel
 - Vinyl printing for the front, sides and/or back panels
 - Custom laminate panels front, sides and/or back panels



HEAVY DUTY PORTABLE BAR

Folds to 31.5" in 5 minutes (No tools)

FEATURES

- Heavy-duty steel frame with protective powder coat available in black
- Heavy-duty Construction
- Customizable Laminated Exterior Panels
- 1 Speed Rail
- Heavy-Duty 5" plated casters
- 5 Minute set up time

DIMENSIONS & WEIGHT

Open: 67" Wide x 48" Tall x 42" Deep
 Folded: 69" Wide x 47" Tall x 31.5" Deep
 Weight: 430 lbs
 Caster: 4"

OPTIONAL UPGRADES

- Ice Bin (with or without Drain Tank)
- Self-Contained Sink (Room Temp water)
- Self-Contained Sink (Hot & Room Temp water)
- LED Lighting
- LED Lighting (no battery)
- Work Surface Lighting
- Cover (Folded)
- Cover (Assembled)



RUSTIC PROFESSIONAL BAR

Folds to 16.5" in 5 minutes
 Each Bar Has Unique Distressed Marks
 Recommended for indoor use

FEATURES

- Heavy-duty steel construction with clear coated rustic metal finish
- Interchangeable Panels - Translucent white acrylic, colored acrylic, custom graphics or laminates
- Elongated panels hide casters from view
- Optional LEDs
- Cover (Folded) Included
- Rustic clear coat raw metal finish with unique distress marks (Recommended for indoor use)
- Folds down to 16.5"
- 5 Minute set up time
- Upscale counter design
- Foldable shelving underneath
- Cup rack
- Paper towel rack
- Rag holder
- Knife holder

DIMENSIONS & WEIGHT

Open: 65" Wide x 48.5" Tall x 35.5" Deep
 Folded: 66" Wide x 60" Tall x 16.5" Deep
 Weight: 270 lbs
 Caster: 3"

OPTIONAL UPGRADES

- LEDs Lighting is Available for all Panel Upgrades
 - LEDs come with 8 color options & remote
 - Optional rechargeable battery lasts 6 hours
- Panel Options
 - Colored acrylic back panel
 - Vinyl printing for the front, sides and/or back panels
 - Custom laminate panels front, sides and/or back panels
- Cover (Assembled)



RUSTIC COMPACT BAR

Folds to 7.5" in less than 2 minutes (No tools)
 Each Bar Has Unique Distressed Marks
 Recommended for indoor use

FEATURES

- Durable steel construction
- Interchangeable Panels - Translucent white acrylic, colored acrylic, custom graphics or laminates
- Elongated panels hide casters from view
- Bar cover included
- Optional LEDs
- Customizable/Brand-able Panels
- Rustic clear coat raw metal finish with unique distress marks
- Weighs only 70 lbs
- Set up in less than 2 minutes
- Foldable Shelving
- Can fit in a car

DIMENSIONS & WEIGHT

Open: 39.5" Wide x 50" Tall x 24.5" Deep
 Folded: 32.5" Wide x 51" Tall x 7.5" Deep
 Weight: 70 lbs
 Caster: 3"

OPTIONAL UPGRADES

- LED Lights *
- Vinyl Graphics
- Black Acrylic Panels
- Custom Laminate Panels

* Available only with certain panel options





STAINLESS STEEL PORTABLE BARS

Suitable for Outdoor Use
The frame is made entirely of 304 Stainless Steel.



STAINLESS STEEL FOLD & ROLL BACK BAR

Folds to 27.5" in 8 minutes

FEATURES

- Stainless Steel frame (Tubular design)
- Translucent white or solid black acrylic panels
- Two upper display shelves
- Lower storage cabinet with removable and lockable swinging doors.
- Three removable flat stainless steel inserts.
- Six heavy-duty lockable 4" thermo rubber-plated casters
- Covers (for folded and assembled positions)

DIMENSIONS & WEIGHT

Open: 68" Wide x 80" Tall x 31" Deep
Folded: 69" Wide x 51" Tall x 25" Deep
Weight: 480 lbs
Caster: 4"

OPTIONAL UPGRADES

- Stainless Steel ice bin with slide top lid and drain tank fits (interchangeable with any of the 3 flat stainless steel inserts)
- Remote controlled LED shelf lighting for upper display
- Rechargeable 8-hour battery for LEDs
- Panel Options
 - Vinyl Printing
 - Textured vinyl print panels
 - Custom laminate panels

Standard acrylic options are white or black. Other acrylic color options are available, pricing and lead time will vary. Please contact us for more information.



CURVED COUNTER STAINLESS STEEL HEAVY DUTY BAR

Folds to 26" in less than 5 minutes (No tools)

FEATURES

- 1 x White Acrylic Front Panel
- 2 x Stainless Steel Side Panels
- 1 x Speed Rail
- 2 x Covers (Folded & Assembled)
- 304 Stainless Steel Customer Counter
- 1 x Foot Rail
- 6 x 5" Plated Casters
- Stainless Steel Base
- Stainless Steel Work Surface

* Also available in straight counters



DIMENSIONS & WEIGHT

CURVED COUNTER
Open: 86" Wide x 45.5" Tall x 44" Deep
Folded: 86" Wide x 49" Tall x 26" Deep
Weight: 386 lbs
Caster: 5"

STRAIGHT COUNTER

Open: 70" Wide x 45.5" Tall x 40" Deep
Folded: 70" Wide x 45" Tall x 26" Deep
Weight: 375 lbs
Caster: 5"



CURVED COUNTER STAINLESS STEEL HEAVY DUTY BAR
(continuation)

OPTIONAL UPGRADES

- Panel Options
 - 3 Stainless Steel Panels
 - 1 Customizable Front Panel, 2 Stainless Side Panels
 - 3 Customizable Panels (Front and Sides)
 - Customizable Panel Options
 - Textured Vinyl Print (Mimic Wood & Stone Looks on Acrylic Panels)
 - Laminate on Marine Board Panels (This panel option must be covered from the elements)
- Exterior LED & Branding Upgrades (Available with all panel types)
 - Vinyl Print (Branded Logo on any panels)
 - LEDs w/ Battery
 - LEDs w/ No Battery



- Interior Upgrades (Interchangeable in 3 Compartments)
 - Ice Bin w/ Tank (Max 3 per bar)
 - Sink SC Sink no Heater (Max 1 per bar)
 - Sink SC Sink w/ Heater (Max 1 per bar)
- Umbrella Holder (Can go on the left or right side)
- Attachment Kit to Connect Bars (For Straight Counters only)



Products: Curved Counter Stainless Steel Heavy Duty Bar and Stainless Steel Fold & Roll Back Bar
Panels: Spiced Cherry Textured Vinyl Print

Accessories: Self-contained Sink & Ice Bin Kit



Products: Curved Counter Professional Bar and Fold & Roll Back Bar
 Panels: Italian Silver Ash Laminate Panels



Accessories: Self-contained Sink & Ice Bin Kit



Products: Professional Bar Curved Counter and Fold & Roll Back Bar
 Panels: White Acrylic



Products: Curved Counter Professional Bar and Fold & Roll Back Bar
Panels: Antique Marula Pine Laminata



GRAND HYATT KAUAI
RESORT & SPA
Product: The Professional Bar and
The Fold and Roll Back Bar with Black
Frame
Panels: Textured Wood Vinyl Print
Use: Hotel Bar/ Event Use



CRAFTED HOSPITALITY
Product: Curved Counter
Professional Bar White Frame
Panels: Textured Wood Vinyl Print
Use: Event Bar



DARK SKY
DISTILLERY
Product: Stainless Steel
Heavy Duty Bar
Panels: Black Acrylic Panels with Custom
Graphics & LED Lighting



PUNCH BOWL SOCIAL
Product: The Professional Bar Black Frame
Panels: Vinyl Printing



FLASH BAR™

MODULAR SYSTEMS



Scan The Code To Visit
The Flash Bar web page





FLASH BAR™

MODULAR SYSTEMS

The Flash Bar Modular System is a product line of The Portable Bar Company. The Flash Bar goes places wheels can't, such as upstairs or over grass since it can be broken down and carried.

Its customizable design allows you to pick and change the size, shape, look, and accessories to create a unique serving experience.

Its easy set up allows you to change your bar on site per your event's needs. Yet it's durable enough to be used as a substitute for a permanent solution.

PICK YOUR SHAPE

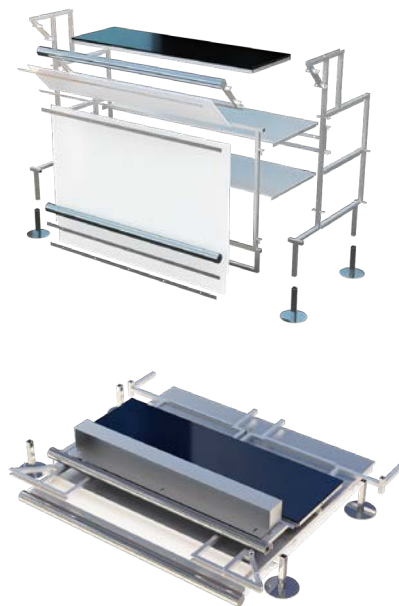
Build custom bar shapes



by mixing and matching 6 different shaped segments



transport the bar by breaking them down into smaller pieces in minutes



* Matching Back Bars are available too

CHOOSE THE INTERIOR

Create your own use with the available upgrades:

- Sinks
- Ice Storage
- Speed Rails
- Adjustable Shelving
- Trash Chutes



* Upgrade the Flash Bar with a draft system by adding a Jockey Box

DESIGN THE LOOK

Options vary for indoor and outdoor use



Optional Panel Upgrades for Flash Bar & Flash Bar Back Bar:

- Comes with White ACP Panels (Aluminum Composite)
- LED Lighting (Works with all Panel Types)
- Vinyl Printing (Branding & Logos)
- WilsonArt Laminate (Wood & Stone Looks for Indoor Use) 800 + Finishes
- Textured Vinyl Printing (Wood & Stone Looks for Outdoor Use)

Counter Upgrades:

- Comes with Black Acrylic Counters
- Seaboard Counters (White or Black)
- Stainless Steel Counters
- WilsonArt Laminate Counters (Wood & Stone Looks for Recommended for Indoor Use Only) 800 + Finishes





STRAIGHT SEGMENT

Adds Length & Holds Accessories

INCLUDES

- 2 Leveler feet
- 1 Side Frame
- 1 Footrail
- 1 Large Front Panel
- 1 Small Front Panel
- 2 Shelves (one is the working surface)
- 1 Acrylic Customer Counter

DIMENSIONS & WEIGHT

Assembled: 4'2" Wide x 2'8" Deep x 3'8" Tall
Weight: 100 lbs



CIRCULAR SEGMENT

Makes Circle & Holds Accessories

INCLUDES

- 3 Leveler feet
- 1 Side Frame
- 1 Footrail
- 1 Large Front Panel
- 1 Small Front Panel
- 2 Shelves (one is the working surface)
- 1 Acrylic Customer Counter

DIMENSIONS & WEIGHT

Assembled: 4'5" Wide x 2'9" Deep x 3'8" Tall
Weight: 100 lbs



2 FT SEGMENT

Adds Length & Holds Accessories

INCLUDES

- 2 Leveler Feet
- 1 Side Frame
- 1 Footrail
- 1 Large Front Panel
- 1 Small Front Panel
- 2 Shelves (one is the working surface)
- 1 Acrylic Customer Counter

DIMENSIONS & WEIGHT

Assembled: 2'5" Wide x 2'9" Deep x 3'8" Tall
Weight: 80 lbs



90° CORNER SEGMENT

Makes Right Angles & Rounded Ends

INCLUDES

- 3 Leveler feet
- 1 Side Frame
- 1 Footrail
- 1 Large Front Panel
- 1 Small Front Panel
- 2 Shelves (one is the working surface)
- 1 Acrylic Customer Counter

DIMENSIONS & WEIGHT

Assembled: 2'8" Wide x 2'8" Deep x 3'8" Tall
Weight: 80 lbs



60° CORNER SEGMENT

Makes V-Shapes & Hexagons

INCLUDES

- 3 Leveler feet
- 1 Side Frame
- 1 Footrail
- 1 Large Front Panel
- 1 Small Front Panel
- 2 Shelves (one is the working surface)
- 1 Acrylic Customer Counter

DIMENSIONS & WEIGHT

Assembled: 2'8" Wide x 3'1" Deep x 3'8" Tall
Weight: 80 lbs



REVERSE 90° CORNER SEGMENT

Follows Corners

INCLUDES

- 2 Leveler feet
- 1 Side Frame
- 1 Footrail
- 1 Large Front Panel
- 1 Small Front Panel
- 2 Shelves (one is the working surface)
- 1 Acrylic Customer Counter

DIMENSIONS & WEIGHT

Assembled: 3'11" Wide x 2" Deep x 3'8" Tall
Weight: 80 lbs



3 Straight Segments



(1) Circular Segments



(1) Straight Segment, (1) 2 FT Segment



(4) Straight Segments, (2) 90 Segments



(5) Straight Segments, (4) 60° Segments



(4) Straight Segment, (1) 90° Segment,
(1) Reverse 90° Segment



ADA SEGMENT

ADA - Compliant

INCLUDES

- 2 Leveler feet
- 1 Side Frame
- 1 Large Front Panel
- 1 Small Front Panel
- 2 Shelves (one is the working surface)
- 1 Acrylic Customer Counter

DIMENSIONS & WEIGHT

Assembled: 5'8" Wide x 3" Deep x 3'8" Tall
Weight: 180 lbs



(2) Straight Segments, (1) ADA Segment



END CAP KIT

FINISHES BAR

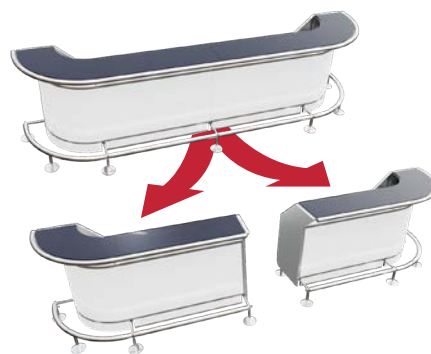
Extra set lets you split multiple segment bars into smaller bars

INCLUDES

- 2 End Caps
- 1 Side Frame
- 2 Levelers

WEIGHT

25 lbs



(2) Straight Segments, (2) 90° Segments



BACK BAR

INCLUDES

- 1 lower side frame with feet
- 1 upper side frame
- 2 stainless steel work shelves
- 2 stainless steel upper display shelves
- 1 white acrylic panel
- 1 stainless steel electrical box with GFCI electrical cord

DIMENSIONS & WEIGHT

Assembled: 59.31" Wide x 30" Deep x 74.89" Tall
Weight: 190 lbs



(2) Back Bars with optional Sign Holder



BAR ESSENTIALS

Most accessories kits are available on the right or left side for the Straight Segment. Some accessory kits are available for the Circular, 2ft, and 90° Corner Segments and those are usually placed in the center of the work surface. Every accessory kit comes with all the parts needed to retrofit it into an existing segment.



ICE BIN KITS

- Ice Bin Kits fit in our Straight, Circular, 2ft, and 90° Corner Segments

All Ice Bins can be purchased with or without a grey water tank to capture melting ice water. All ice bins come with a lid, accessory shelf, and drain. (Exceptions apply to the NSF Flash Bar Line)



SINK KITS

- For Straight & Circular Segments *
 - Sink - No Plumbing
 - Grey Water Sink
 - Self-Contained Sink - Room Temp
 - Self Contained Sink - Hot & Room Temp
- For Straight Segments
 - 4 Basin Sink Kit w/ Faucet & Drains
 - Full Self Contained 4 Basin Sink Kit
 - Drainboard Sink



SPEED RAILS

- For Straight & Circular Segments
 - Half Speed Rail
 - Tiered Speed Rail
- For Straight Segments
 - Full-length Speed Rail
 - (2) Tiered Speed Rails



TRASH CHUTE

- Trash Chute for Straight segment
- Trash Chute for 90° Corner Segment



SHOWMAN'S SHELVES

- For Straight Segments
 - Regular (18" Wide)
 - Full-length (47.25" Wide)



GLASS RINSING SYSTEM

- Stainless Steel Glass Rinsing that accommodates glasses up to 4" in diameter
- (2) 5 Gallon High-density Polyethylene Tanks
- 1.9GPM Water Pump with Power Adaptor
- System Fittings and Hoses
- Surge Protector

SODA & BEER DISPENSING



SODA GUN MOUNT

For Straight Segments
Designed for Wunder-Bar® and Schroeder America™ style soda guns



JOCKEY BOX

For Straight Segments
(2) 120' Stainless Steel long coils for colder pour
Optional CO2 system.



PRE-MIX SODA GUN SYSTEM

For Straight Segments
4-Flavor – Up to two flavors per gun
2 Soda Gun Mounts
Ice bin with integrated Cold Plate
10 lb CO2 Tank
Primary and Secondary Regulators

LIGHTING & SAFETY



WORK SURFACE LIGHTING

For Straight Segments



SALOON DOORS

Fits on End Caps



LOCKING CABINET DOORS

For Straight Segments



SHADE BRACKET

STORAGE & TRANSPORT



ROLLING BASE

For Straight, Circular & 90° Corner Segments



FLASH BAR & BACK BAR COVERS



FLASH BAR CARRY BAGS



ROAD CASES

Fits 1-2 segments or a combination of accessories.



NSF CERTIFIED FLASH BAR

WHAT IS NSF CERTIFICATION?

Millions of people take the safety of their food, water and consumer products for granted on a daily basis. Why? Because of three letters: NSF. NSF certification is your key to making sure that the products you use meet strict standards for public health protection.

testing and material analyses to unannounced plant inspections, every aspect of a product's development is thoroughly evaluated before it can earn an NSF certification.

Having the Flash Bar NSF certified lets you know we met the strict standards and procedures imposed by NSF. From extensive product



NSF FLASH BAR SEGMENTS

- Straight Segment
- Circular Segment
- 60° Corner Segment
- 90° Corner Segment
- Reverse 90° Corner Segment
- End Caps

NSF APPROVED ACCESSORIES

- 4 Basin Sink with Faucet & Drains
- Drop-In Ice Bin
- Speed Rail
- LED
- Signage
- Laminate
- Flash Bar Cover
- Flash Bar Case
- Road Case

1 Shape > 2 Accessories > 3 Exterior > 4 Back Bar > 5 Extras > 6 Review & Finalize

Step 1: Start by building your Shape Next: Choose Accessories

View Segment Dimensions Floor Area 16'12" x 6'4"



Scan QR Code To Bookmark the Page.
<https://theportablebarcompany.com/flash-bar-modular-systems>

Create your own Flash Bar with our Bar Builder on our website. (Works on Desktop Computer)

Takes less than 5 minutes to fill out. It calculates the price, the bar footprint, and generates a rendering in real-time.



Scan QR Code To Visit our Youtube channel

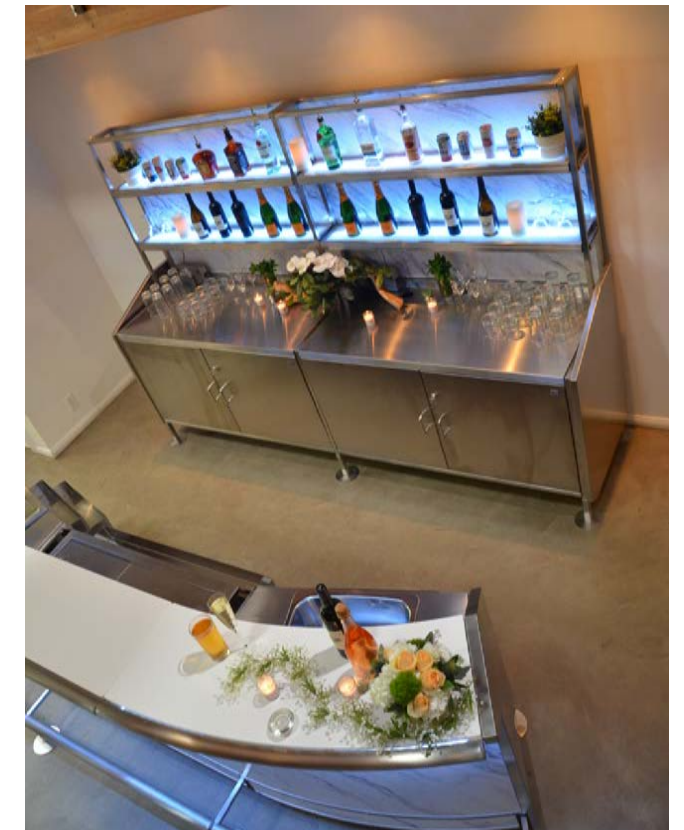
Watch all our product videos



Products: Flash Bar and Back Bar
 Flash Bar Shape: 3 Circular Segments (11'5" Wide)
 Exterior: Matte Vinyl Print , Black Seaboard Counters
 Accessories: 2 Drop-In Ice Bins and Sink
 Backbar: 2 Flash Bar Backbars linked
 Backbar Addons: Cabinet door, LED light, and Top Sign Holder



Products: Flash Bar and Back Bar
 Flash Bar Shape: 1 Straight Segment & 2 Circular Segments (12'3" Wide)
 Exterior: Calcutta Marble Laminate & White Seaboard Counters
 Accessories: Sink, Drop-in Ice Bin, Under Bar Ice Bin & Speed Rails
 Backbar: 2 Flash Bar Backbars linked
 Backbar Addons: Cabinet door and LED light





AMANGANI RESORT
 Product: Flash Bar and Back Bar
 Shape: 1 Straight Segment & 2 90° Segments (9'5" Straight-shape)
 Exterior: Dubois Concrete Laminated Panels & Acrylic Counters

Accessories: Single Back Bar
 Use: Portable Patio Bar



SILVER MOON
 Product: Flash Bar
 Segment Count: (3) Straights, (2) 90° Corners
 Use: Mobile Beer Serving Station
 Exterior: Vinyl Printing



SKY TOP
 Products: Flash Bar & Back Bar
 Shape: 4 44" Circular Segments
 Exterior: Aluminum Composite Panels with Vinyl Print, LED Lighting
 Use: Portable Bar





Black Frame Team Stand in Tawney Marquetry laminate panels and with Printed Acrylic LED Sign



The Hostess Station specializes in crafting host stands and stations built to withstand the demanding standards of the restaurant and bar industry.

Our products help businesses maintain organized, welcoming greeting areas. We proudly serve a diverse range of clients, including bars, restaurants, wineries, business complexes, breweries, and hotels nationwide.



TEAM STAND
White Frame
in White Acrylic Panels



TEAM STAND
Black Frame
in Laminate Panels



COMPACT STAND
Vinyl Printed Panel & Menu Holder



STANDARD STAND
Black Frame



STANDARD STAND
White Frame



DELUXE STAND
White Frame in
Laminate Panels & with
Menu Holder & LED Sign



DELUXE STAND
Black Frame in
Laminate Panels & with
Menu Holder



Scan The Code To Visit
The Hostess Station website

COMPACT HOSTESS STAND

STANDARD HOSTESS STAND



Black Frame Compact Stand with Menu Holder



White Frame Compact Stand with Tiered Menu Holder and Cabinet Door



Black Frame with Transaction Counter and Cabinet Door



White Frame



Compact Hostess Stands from left (no panel, laminate panel, white acrylic panel, & vinyl printed panel)

UNIQUE FEATURES

- 16 gauge, heavy-duty metal frame in black or white powder coated steel
- Interchangeable front panel available in hundreds of laminate options, translucent white acrylic, and solid gloss colored acrylic
- Optional power supply station
- Optional menu holder
- Optional LED System

STANDARD FEATURES

- Locking drawer w/ stainless steel handle
- 2 removable shelves
- 2 Heavy-duty casters
- Replaceable parts
- Pre-assembled
- Manufacturer's Warranty

DIMENSIONS & WEIGHT

24" W x 21" D x 48" H (including menu holder)
 18" W x 21" D x 48" H (excluding menu holder)
 16" W x 19" D (work surface area)

Weight: 98 lbs



Compact Hostess Stand in white acrylic panel with LED

UNIQUE FEATURES

- 18 gauge, heavy-duty metal frame in black or white powder coated steel
- Optional transaction counter
- Optional Cabinet Door
- Optional Vinyl Print or Large Magnet Signage Options

STANDARD FEATURES

- Locking drawer w/ stainless steel handle
- 2 removable shelves
- 4 Heavy-Duty Locking Plated Casters
- Replaceable parts
- Pre-assembled
- Manufacturer's Warranty

DIMENSIONS & WEIGHT

24" W x 21" D x 48" H
 22" W x 18.5" D (work surface area)

Weight: 110 lbs



Black Frame with Transaction Counter and Cabinet Door

DELUXE HOSTESS STAND



*Black Frame Curved Counter
Deluxe Stand in Magnata
1880 laminate*



*White Frame Deluxe Stand with
Tiered Menu Holder, Gold Counter
Trim & in Tawney Marquetry
laminate*

STANDARD FEATURES

- Translucent white panels
- Electronic device compatible
- Steel working surface
- Drawer w/ stainless steel handle
- 2 removable shelves
- 4 Heavy-duty locking plated casters
- 1 slam locks with keys
- Replaceable parts
- Delivers fully assembled
- Manufacturer's Warranty

DIMENSIONS & WEIGHT

39.5" W x 24" D x 49" H (including menu holder)
36.5" W x 24" D x 49" H (excluding menu holder)
28" W x 18" D (work surface area)

Weight: 150 lbs

UNIQUE FEATURES

- 16 gauge, heavy-duty metal frame in black or white powder coated steel
- Interchangeable panels available in 800+ laminate options as well as custom artwork, black, and color acrylic options
- Optional Gold, bronze, and stainless steel trim
- Optional Curved Counter
- Optional Custom LED signage
- Optional Sneeze Guard
- Optional LED Lighting
- Optional Single or tiered menu holder
- Optional Cabinet Door



*with curved
counter*



*with cabinet
door*

The Hostess Station



Black Frame Deluxe Stand in Marble Fog laminate panels



White Frame Team Stand with Curved Counter and in Brazilian Grey Laminate

TEAM HOSTESS STAND



Black Frame Team Stand in Big Island Koa laminate



White Frame Team Stand in White Acrylic Panels



Black Frame Team Stand with cabinet door upgrade and in Big Island Koa laminate



White Frame Team Stand in White Acrylic Panels

ONLY ON THE TEAM HOSTESS STATION

Scratch-Resistant Frame Options:

- White / Black – heavy-duty 16 gauge black powder-coated steel

UNIQUE FEATURES

- 16 gauge, heavy-duty metal frame in black or white powder coated steel
- Interchangeable panels available in 800+ laminate options as well as custom artwork, black, and color acrylic options
- Optional Curved Counter
- Optional Gold or bronze trim (*straight counters only*)
- Optional Custom LED signage
- Optional LED lighting
- Optional Cabinet Door
- Optional Single or tiered menu holder available in white or black

STANDARD FEATURES

- Translucent white panels
- Electronic device compatible
- Steel working surface
- Drawer w/ stainless steel handle
- 2 removable shelves
- 4 Heavy-Duty locking plated casters
- 2 slam locks with keys
- Replaceable parts
- Arrives fully assembled
- Manufacturer's Warranty

DIMENSIONS & WEIGHT

56" W x 28" D x 49" H (*including menu holder*)

53" W x 28" D x 49" H (*excluding menu holder*)

44.5" W x 23.5" D (*work surface area*)

Weight: 350 lbs.



Black Frame Team Stand with Laser-cut LED Signage, Curved Counter, and in Tawney Marquetry laminate.

Scan The Code To Visit
Wilsonart's Hundreds Of
Laminate Options Online



LED SIGNAGE



Etched Acrylic

Best for more complex logos with fine linework – can be mixed with laser-cut portions to increase visibility and add visual interest.



Laser-Cut Laminate

Best for simple designs with thicker linework in one or two colors.

Choose from Black, White, or Milwaukee JCT Oxide for the sign laminate.



Printed Acrylic

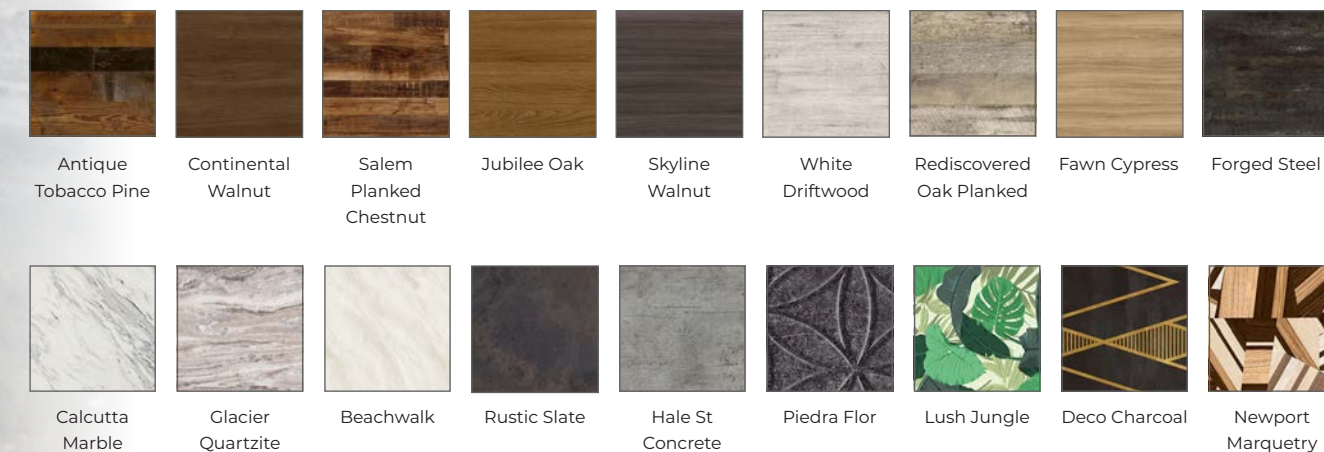
Best for multicolored logos and use with or without LEDs.

LED signs are available in textured vinyl print & laminate panels of Deluxe & Team stands

TEXTURED VINYL PRINT



800+ LAMINATE FINISH OPTIONS





Black Frame Team Stand with bronze counter trim and in Cipollino Grigio laminate panels



Black Frame Team Stand with curved counter and in Cipollino Grigio laminate panels



Black Frame Deluxe Stand with curved counter, menu holder, LED, & in Rustic Slate laminate panels



Black Frame Deluxe Stand with LED & LED Sign, and in Antique Tobacco Pine laminate



Black Frame Deluxe Stand with menu holder, in Scorched Chestnut laminate panels and vinyl decal print



Rustic Frame Team Stand in Forged Steel laminate panels and with LED Sign



Rustic Frame Team Stand in Salem Planked Chestnut laminate panels and with LED Sign



White Frame Deluxe Stand with menu holder & in vinyl print panels



Black Frame Compact Stand with menu holder & in textured vinyl print panels



White Frame Deluxe Stand in Calcutta Marble laminate panels and with LED Sign



THE VALET SPOT™

The Valet Spot is the leading supplier of innovative and high-quality valet parking equipment in the world. Our products keep keys secure and organized at restaurants, hospitals, casino, car dealerships, airports, and hotels worldwide.



HEAVY DUTY DELUXE PODIUM with Schlage Lock



COMPACT PODIUM with Acrylic panel & custom vinyl signage



DELUXE PODIUM with 200 keyhooks installed

Frame Colors
 White Black



STANDARD PODIUM

Frame Colors
 White Black



PORTABLE PODIUM



CUSTOM DELUXE PODIUM in White Acrylic Panels

Frame Colors
 White Black



CUSTOM PROFESSIONAL KIOSK in White Acrylic Panels

Frame Colors
 White Black



PROFESSIONAL KIOSK

Frame Colors
 White Black



Scan The Code To Visit The Valet Spot website



COMPACT PODIUM

Least Expensive LED Podium

BASIC FEATURES

- 18 gauge steel
- Scratch-resistant textured black finish
- Staggered key hooks w/ white, screen printed numbers
- 2 Heavy-duty Non-Locking Casters
- 100 key hooks
- 2 Metal cam locks w/ 4 keys
- Umbrella Holder
- Brushed stainless steel working surface
- Pre-assembled
- Replaceable Parts
- Manufacturer's Warranty

DIMENSIONS & WEIGHT

Open: 18"W x 19"D x 48.5"H
Weight: 98 lbs

OPTIONAL UPGRADES

- Door Lock
 - Dual Key combination cam lock
- Drawer inserts
 - Cash Tray Drawer Insert
 - Heavy Duty Lockable Tip Box
- Trim Colors (Stainless Steel, Black)
- LED Kit
- Artwork Options: Large Magnet, Vinyl Decal, & Vinyl Wrap (see page 53)



PORTABLE PODIUM

Designed for accounts that handle private parties and events

BASIC FEATURES

- Easy grip handles for transportation
- Durable metal construction
- Scratch-resistant, textured black finish
- Interchangeable black sign (550mm x 830mm, 3mm thick)
- 100 Key hook capacity
- Key cam lock
- Steel working surface with umbrella holder
- 3 pins keep podium locked when folded
- Manufacturer's Warranty

DIMENSIONS & WEIGHT

27"W x 21"D x 48"H
Weight: 70 lbs



STANDARD PODIUM

Least Expensive Podium on the Market

BASIC FEATURES

- 50 key hooks
- 18 gauge sheet metal
- Scratch-resistant textured black finish
- Staggered key hooks w/ white, screen printed numbers
- Zinc hardware
- Brushed stainless steel working surface
- Umbrella holder
- 4 Heavy Duty Casters
- 2 Slam-action locks with 2 keys
- Tip slot
- Replaceable parts
- Pre-assembled
- Manufacturer's Warranty

DIMENSIONS & WEIGHT

24.25"W x 19"D x 48.25"H
Weight: 110 lbs

OPTIONAL UPGRADES

- Key Hooks (100, 150, 200)
- Door Lock
 - Dual Key combination cam lock
 - Simplex Pushbutton Combination
 - Schlage Keypad Lock
- Drawer inserts
 - Cash Tray Drawer Insert
 - Heavy Duty Lockable Tip Box
- Transaction Counter
- Shelves (Short & Long)
- Artwork Options: Large Magnet, Vinyl Decal, & Vinyl Wrap (see page 53)



200 key hooks



DELUXE PODIUM

Our second largest podium and the preference for low staff high volume accounts

BASIC FEATURES

- Counter top with brushed stainless steel trim
- 6" wider (total width of podium is 30")
- Key drop hole with theft guard
- Electronic compatible
- Tip box installed
- Locking security bar
- Anchor loop
- 16 gauge, heavy duty sheet metal construction
- 50 Key Hooks
- Zinc hardware
- Brushed stainless steel working surface
- Umbrella holder
- 4 Heavy Duty Casters
- 2 Slam-action locks with 2 keys
- Tip slot
- Replaceable parts
- Pre-assembled
- Manufacturer's Warranty

DIMENSIONS & WEIGHT

36.5"W x 24"D x 49"H
Weight: 125 lbs.

OPTIONAL UPGRADES

- Key Hooks (100, 150, 200)
- Door locks
 - Dual key combination lock
 - Simplex Pushbutton Combination
 - Schlage Keypad Lock
- Shelves (Short, Long)
- Optional bottom trim
- Exterior LED
- Artwork Options: Large Magnet, Vinyl Decal, & Vinyl Wrap (see page 53)



200 key hooks



HEAVY DUTY DELUXE VALET PODIUM

Secure, Professional, Innovative

FEATURES

- 9 gauge, heavy-duty sheet metal construction (Door)
- 16 gauge, heavy-duty sheet metal construction (Rest of the podium)
- Prybar defense plates
- Countertop with brushed stainless steel trim
- Scratch-resistant textured black finish
- Zinc hardware
- Locking security bar
- Schlage Keypad Lock
- 50-200 key capacity
- Staggered key hooks w/ white, screen printed numbers
- Tip slot
- Tip box installed
- Anchor loop
- 4 Heavy-duty Locking casters
- Umbrella holder
- Electronic device compatible
- Replaceable parts
- Pre-assembled
- Manufacturer's Warranty

DIMENSIONS & WEIGHT

38.5" W x 24.5" D x 50"H
Weight: 250 lbs

OPTIONAL UPGRADES

- Key Hooks (100, 150, 200)
- Long Shelf
- Exterior LED
- Artwork Options: Large Magnet, Vinyl Decal, & Vinyl Wrap (see page 53)



200 key hooks



200 keyhooks & LED lighting

PROFESSIONAL KIOSK

The most premium unit offered with the highest key capacity on the market

BASIC FEATURES

- Modern, curved appearance with stainless steel accents
- Convex front panel and curved side panels
- Brushed stainless steel transaction counter
- Recessed stainless steel accent on front panel
- Stainless steel kick plate that conceals casters
- 0-400 Key Capacity
- Double wide (47" total width)
- Tip box installed
- Integrated LED option w/ rechargeable sealed battery
- Electronics Ready
- Corrosion resistant hardware (zinc coated)
- Brushed stainless steel working surface
- Umbrella holder
- 2 locking and 2 non-locking heavy duty casters
- 4 slam-action locks w/ 2 keys
- Tip Slot
- Replaceable parts
- Pre-assembled
- Manufacturer's Warranty

DIMENSIONS & WEIGHT

47"W x 27"D x 51"H
Weight: 350 lbs.

OPTIONAL UPGRADES

- Key Hooks (200, 300, 400)
- Door locks
 - Dual key combination lock
 - Schlage Keypad Lock
- Cash Tray Drawer Insert
- Exterior LED
- Artwork Options: Large Magnet, Vinyl Decal, & Vinyl Wrap (see page 53)



White Professional Kiosk

VALET PODIUM LOCKS



SLAM LOCK

Standard lock with key. Locks automatically when door is closed. Reliable, fast and secure.



COMBINATION CAM LOCK

Access with the master key or dial in the 4 digit combination. Must be manually locked and does not have the ability to be "slam locked". Resettable combination w/ master key helps with keeping track of multiple keys.



KEY CAM LOCK

Cam lock needs to be manually locked. Option for keyed alike and keyed different.



SIMPLEX PUSHBUTTON COMBINATION LOCK

Keyless entry. Push in the combination to access. Locks automatically when door is closed. Fast keyless entry, resettable combination, no keys to manage.



SCHLAGE FE595 KEYPAD ENTRY

Convenient and secure keyless access which locks automatically when door is shut. Program up 19 user codes to fit your security needs. Battery operated key pad lights up for visibility at night. 3 year battery life.



CUSTOM DELUXE

Upscale Look, Customizable, Enhanced Security

BASIC FEATURES

- Countertop with brushed stainless steel trim
- Electronic compatible
- Tip box installed
- Locking security bar
- Anchor loop
- 16 gauge, heavy-duty sheet metal construction
- 50-100 key capacity
- Scratch-resistant textured black /white finish
- Staggered key hooks w/ white, screen printed numbers
- Zinc hardware
- Brushed stainless steel working surface
- Umbrella holder
- 4 Heavy-duty locking casters
- 2 Slam-action locks with 2 keys
- Tip slot
- Replaceable parts
- Pre-assembled
- Manufacturer's Warranty

DIMENSIONS & WEIGHT

Open: 36.5"W x 24"D x 49"H
Weight: 140 lbs

OPTIONAL UPGRADES

- Curved Counter
- Counter Trim Color: Stainless
- Key Hooks (100, 150, 200)
- Door locks
 - Dual Key Combination Lock
 - Simplex Pushbutton Combination
 - Schlage Key Pad Lock
- Laminate Panels
- Exterior LED
- Artwork Options: Vinyl Print & LED Sign (see page 53)



Black Custom Deluxe with Curved Counter



White Custom Deluxe in Laminate Panels



CUSTOM PROFESSIONAL KIOSK

Doublewide | Customizable | Up to 400 Keys

BASIC FEATURES

- Kick plate that conceals casters
- 0-400 Key Capacity
- Double wide (53" total width)
- Tip box installed
- Integrated LED option w/ rechargeable sealed battery
- Scratch-resistant textured black / white finish
- Staggered key hooks w/ white, screen printed numbers
- Corrosion-resistant hardware (zinc-coated)
- Brushed stainless steel working surface
- Umbrella holder
- 4 Heavy-duty locking casters
- 4 slam-action locks w/ 2 keys
- Tip Slot
- Translucent white panels
- Electronics Ready
- Replaceable parts
- Arrives fully assembled
- Manufacturer's Warranty

DIMENSIONS & WEIGHT

Open: 53"W x 28"D x 49.5"H
Weight: 350 lbs

OPTIONAL UPGRADES

- Curved Counter
- Counter Trim Color: Stainless
- Key Hooks (200, 300, 400)
- Door locks
 - Dual Key Combination Lock
 - Schlage Key Pad Lock
- Long Shelf
- Laminate Panels
- Exterior LED
- Artwork Options: Vinyl Print & LED Sign (see page 53)



Black Custom Professional with Curved Counter & in Black Acrylic Panels



White Custom Professional

LAMINATE OPTIONS FOR CUSTOM DELUXE & CUSTOM PROFESSIONAL



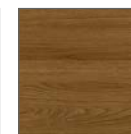
Antique Tobacco Pine



Continental Walnut



Salem Planked Chestnut



Jubilee Oak



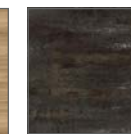
Skyline Walnut



White Driftwood



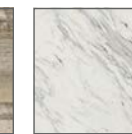
Fawn Cypress



Forged Steel



Rediscovered Oak Planked



Calcutta Marble

More laminate options available at [Wilsonart](http://Wilsonart.com).
Contact us for Pricing, Availability and Delivery Times.

PODIUM SIGNAGE



VINYL DECAL

This is a great option for simple logo decals or text without extensive details or backgrounds. The background color will be the color of the podium panel.

*Can be done on all podiums.



VINYL WRAP

This is a great option for larger, more complex designs or designs that require a specific background color other than the color of the podium panel.

*For our Custom Deluxe and Custom Professional, wrapping will only be done on the panel inserts. Framing will remain original color.



LARGE MAGNET

This is a great option for those who want a specific background color but don't want to permanently affect the podium itself. Our magnets cover the full face of whatever side they are applied to and are fully removable if you decide to use the podium for other uses or companies.

*Not recommended for Custom Deluxe or Custom Professional podiums



LED SIGN

Our LED signs are comprised of clear acrylic with three types of design application: Laser-cut laminate, Etched acrylic, and Printed acrylic. The design application will ultimately be determined by the complexity of the logo provided. (See page 43)

*For Custom Deluxe or Custom Professional podiums ONLY



24 KEY PORTABLE BOX

FEATURES

- 24 key capacity
- 16 gauge zinc treated steel
- Textured powder coating
- Pre-drilled mounting holes
- Staggered key hooks w/ white, screen printed numbers
- Stainless steel hardware
- Slam-action lock
- Manufacturer's Warranty

DIMENSIONS & WEIGHT

18"W x 6"D x 21.5"H
Weight: 20 lbs

OPTIONAL UPGRADES

- Door lock
- Dual Key Combination Lock



50 KEY BOX

FEATURES

- 50 key capacity
- 16 gauge zinc treated steel
- Textured powder coating
- Pre-drilled mounting holes
- Staggered key hooks w/ white, screen printed numbers
- Folding handles
- Stainless steel hardware
- Slam-action lock
- Manufacturer's Warranty

DIMENSIONS & WEIGHT

27.25" W x 4.5" D x 17.35" H
Weight: 31 lbs

OPTIONAL UPGRADES

- Door lock
- Dual Key Combination Lock



100 KEY BOX

FEATURES

- 100 Key hook capacity
- 1 Metal slam-action lock
- Staggered key hooks w/ white, screen printed numbers
- Zinc pre-coating
- Textured powder coat finish
- Manufacturer's Warranty

DIMENSIONS & WEIGHT

23.25"W x 5" D x 29.5" H
Weight: 48 lbs

OPTIONAL UPGRADES

- Door lock
- Dual Key Combination Lock



100 KEYBOX WITH KEYPAD

FEATURES

- 100 key capacity
- Two Step Zinc/ Textured Powder Coat
- Pre-drilled mounting holes
- Keypad Lock
- Staggered key hooks w/ white, screen printed numbers

DIMENSIONS & WEIGHT

Open: 23.5"W x 9"D x 29.5"H
Weight: 52 lbs



200 KEYBOX WITH KEYPAD

FEATURES

- 200 key capacity
- Two Step Zinc/ Textured Powder Coat
- Pre-drilled mounting holes
- Keypad Lock
- Staggered key hooks w/ white, screen printed numbers

DIMENSIONS & WEIGHT

Open: 23"W x 11"D x 29"H
Weight: 80 lbs



50 KEY BOX WITH STAND

FEATURES

- Two large wheels
- Small, lightweight folding design
- Umbrella holder
- 50 Key Hook Capacity
- 1 Metal slam-action lock
- Staggered key hooks w/ white, screen printed numbers
- Zinc pre-coating
- Textured powder coat finish
- Folding handle
- Manufacturer's Warranty

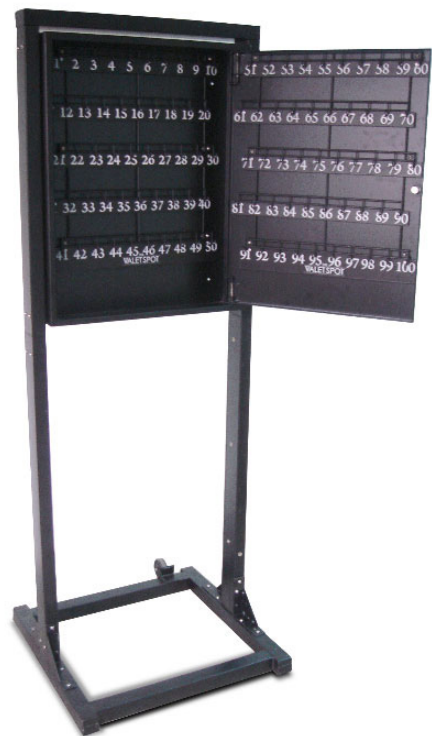
DIMENSIONS & WEIGHT

Open: 24"W x 21"D x 51"H
Weight: 61 lbs

OPTIONAL UPGRADES

- Door lock
- Dual Key Combination Lock





100 KEY BOX WITH STAND

FEATURES

- 100 Key hook capacity
- 1 Metal slam-action lock
- Staggered key hooks w/ white, screen printed numbers
- Zinc pre-coating
- Textured powder coat finish
- Adjustable height
- Manufacturer's Warranty

DIMENSIONS & WEIGHT

Open: 28"W x 26"D x 75"H
Weight: 150 lbs

OPTIONAL UPGRADES

- Door lock
 - Dual Key Combination Lock
- Umbrella Holder

100 Key Box (x2)
with stand



100 KEYBOX WITH KEYPAD & STAND

FEATURES

- 100 Key hook capacity
- Two Step Zinc/Textured Powder Coat
- Pre-Drilled mounting holes
- Keypad Lock
- Staggered key hooks w/ white, screen printed numbers
- Adjustable height

DIMENSIONS & WEIGHT

23.5" W x 26" D x 75" H
Weight: 151 lbs

OPTIONAL UPGRADES

- Umbrella Holder

100 Key Box with Keypad (x2) with stand



The Valet Spot



200 KEYBOX WITH KEYPAD & STAND

FEATURES

- 200 Key hook capacity
- Two Step Zinc/Textured Powder Coat
- Pre-Drilled mounting holes
- Keypad Lock
- Staggered key hooks w/ white, screen printed numbers
- Adjustable height

DIMENSIONS & WEIGHT

28" W x 26" D x 75" H
Weight: 208 lbs

OPTIONAL UPGRADES

- Umbrella Holder

200 Key Box with Keypad (x2) with stand



200 Key Box with Keypad with stand with optional umbrella holder



Vinyl Decal prints on Compact Podium and Delineator Signs



Vinyl Wrap prints on Professional Kiosk



Vinyl Decal print on Custom Professional Kiosk



Vinyl Decal print on Deluxe Podium

The Valet Spot



The Security Station was borne out of requests from The Valet Spot clients to customize our existing podiums with the specific needs of the security industry. We are now becoming the fastest growing producer of durable and cost-effective security podiums and desks in the US.



DELUXE PODIUM



PORTABLE PROFESSIONAL DESK



HEAVY-DUTY DELUXE PODIUM



STANDARD PODIUM



CUSTOM DELUXE PODIUM



CUSTOM PROFESSIONAL PODIUM



COMPACT PODIUM



Scan The Code To Visit
The Security Station website



DELUXE PODIUM

BASIC FEATURES

- Countertop with brushed stainless steel trim
- Electronic compatible
- Locking security bar
- Anchor loop
- 16 gauge, heavy-duty sheet metal construction
- Scratch-resistant textured black finish
- Zinc hardware
- Brushed stainless steel working surface
- Umbrella holder
- 4 Heavy-duty Locking casters
- 2 cam locks w/ keys
- Replaceable parts
- Pre-assembled
- Manufacturer's Warranty

DIMENSIONS & WEIGHT

36.5"W x 24"D x 49"H
Weight: 125 lbs

OPTIONAL UPGRADES

- Door Lock:
 - Dual Key Combination Lock
 - Simplex Pushbutton Combination
 - Schlage Keypad Lock
- Signage Options
 - Vinyl Decal or Wrap
 - Large Magnet
- Cash Tray Drawer Insert
- Shelf Kit
- Bottom Trim
- LEDs



Deluxe Podium with optional shelf



PORTABLE PROFESSIONAL DESK

BASIC FEATURES

- Modern, curved appearance with stainless steel accents
- Convex front panel and curved side panels
- Brushed stainless steel greeting counter
- Stainless steel counter with electronics slot
- Recessed stainless steel accent on front panel
- Stainless steel kick plate that conceals casters
- Vented cage for PC tower
- Fold-down drawer
- Integrated LED option w/ rechargeable sealed battery
- Electronics Ready
- Scratch-resistant textured black finish
- Corrosion resistant hardware (zinc coated)
- Brushed stainless steel working surface
- Umbrella holder
- 2 locking and 2 non-locking heavy duty casters
- 4 cam locks w/ keys
- Replaceable parts
- Pre-assembled
- Manufacturer's Warranty

DIMENSIONS & WEIGHT

47"W x 27"D x 51"H
Weight: 350 lbs

OPTIONAL UPGRADES

- Door Lock:
 - Dual Key Combination Lock
 - Schlage Keypad Lock
- Signage Options
 - Vinyl Decal or Wrap
 - Large Magnet
- Cash Tray Drawer Insert
- Long Shelf
- PC Wall
- LEDs
- USB Charging Station



LOCATION

Our offices are located at:

3111 Camino Del Rio North
Suite 400
San Diego, CA 92108

Products are housed at and originate from:

2490 S. Santa Fe
Unit B
Vista CA 92084

CONTACT US

AE INTERNATIONAL

WEB: aeinternationalgroup.com

Email: info@aeinternationalgroup.com

Phone: 866-853-7898

THE PORTABLE BAR COMPANY

WEB: theportablebarcompany.com

Email: sales@theportablebarcompany.com

Phone: 877-620-9543

THE HOSTESS STATION

WEB: thehostessstation.com

Email: sales@thehostessstation.com

Phone: 877-930-7178

THE VALET SPOT

WEB: thevaletspot.com

Email: sales@thevaletspot.com

Phone: 877-977-8733

THE SECURITY STATION

WEB: thesecuritystation.com

Email: sales@thesecuritystation.com

Phone: 877-740-4538