



I N T E R N A T I O N A L

We specialize in designing and producing  
expertly engineered valet podiums, hostess stations,  
security stations, and portable bars.



I N T E R N A T I O N A L

## OUR COMPANIES



### **TheValetSpot.com**

[Steel Valet Podiums](#)

[Custom Wood Valet Podiums](#)

Key Boxes and other Valet Accessories



### **TheSecurityStation.com**

[Steel Security Desks](#)

[Custom Wood Security Desks](#)

Security Accessories



### **ThePortableBarCompany.com**

[Folding Bars on Wheels](#)

[Customizable Modular Portable Bars](#)

Draft Equipment



### **TheHostessStation.com**

[Steel Hostess Stands](#)

[Custom Wood Hostess Stands](#)

LED Signage

## ABOUT US

[History](#)

[Our Team](#)

[Location](#)

[Contact Us](#)

AEIG - R2

## STEEL VALET PODIUMS

# THE VALET SPOT™

The Valet Spot is the leading supplier of innovative and high-quality valet parking equipment in the world. Our products keep keys secure and organized at restaurants, hospitals, casinos, car dealerships, airports, and hotels worldwide.



COMPACT PODIUM  
*with custom signage  
on Acrylic panel*



DELUXE PODIUM  
*with 200 keyhooks installed*



STANDARD  
PODIUM



WHITE STANDARD  
PODIUM



PORTABLE  
PODIUM



CUSTOM DELUXE  
PODIUM



PROFESSIONAL  
KIOSK



## STEEL SECURITY DESKS



The Security Station was borne out of requests from The Valet Spot clients to customize our existing podiums with the specific needs of the security industry. We are now becoming the fastest growing producer of durable and cost-effective security podiums and desks in the US.



DELUXE PODIUM  
*with keyboard & PC trays*



PORTABLE PROFESSIONAL  
DESK



STANDARD  
PODIUM



WHITE STANDARD  
PODIUM



CUSTOM DELUXE  
PODIUM



COMPACT  
PODIUM

## STEEL HOSTESS STANDS

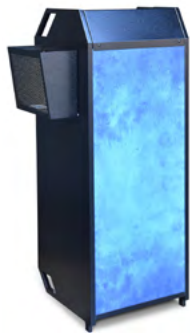


The Hostess Station specializes in hostess stands and hostess stations that are specifically designed to meet the rugged standards of the restaurant & bar industry. Our products keep greeting areas in businesses organized and welcoming. We supply bars, restaurants, wineries, business complexes, breweries, and hotels across the nation.



**TEAM STAND**

*Rustic Frame, Laminated Panels & Shelves, LED Sign, & Menu Holder*



**COMPACT STAND**  
*Vinyl Printed Panel & Menu Holder*



**DELUXE STAND**  
*White Frame, Laminated Panels, & Tiered Menu Holder*



**DELUXE STAND**  
*Rustic Frame, Laminated Panels, & Tiered Menu Holder*



**DELUXE STAND**  
*Black Frame, Laminated Panels, & Menu Holder*

# CUSTOM WOOD PODIUMS & STATIONS



## THE DESIGNER SERIES™

The Designer Series™ is a custom built podium designed by you. All aspects of the unit can be customized including the size, style, finish, and features allowing you to create a podium tailored specifically for your location.

Design your podium in minutes using our real-time web presentation sales tool.



### THE VALET SPOT'S KIOSK

*Straight-edge Panel, Asian Night Laminate, Brushed Aluminum Trim, Laser-cut Acrylic Branding, H-shelf counter, 50-key Capacity, Shelving & Cabinet Doors on both sides*



### THE HOSTESS STATION'S PODIUM

*Classic Slant Panel, Kenya Mahogany Laminate, Brushed Aluminum Trim, and Rustic Menu Holder*



### THE VALET SPOT'S PODIUM

*Classic Slant Panel, Asian Night Laminate, and 100-key capacity*



### THE SECURITY STATION'S PODIUM

*Curved-edge Panel, and Schlage Keypad Lock*

## FOLDING BARS ON WHEELS



The Portable Bar Company is the preferred beverage sales equipment solution by bartenders, events, brands and many more. Our products are specifically designed to meet the rugged standards of the restaurant & bar industry.

## POWDER COAT FRAMES AND CUSTOMIZABLE PANELS

These models are available with black or white powder coat frames for a tailored uniformed look.



FOLD & ROLL  
BACK BAR



PROFESSIONAL BAR  
CURVED COUNTER



PROFESSIONAL  
BAR



STANDARD BAR



COMPACT  
BAR

## RUSTIC CLEAR COAT FRAMES AND CUSTOMIZABLE PANELS

These models are available with clear coat frames so you can see the unique distressed steel for a rustic look that patinas over time.



DISTRESSED  
HEAVY-DUTY  
BAR



RUSTIC  
PROFESSIONAL  
BAR



RUSTIC  
STANDARD  
BAR



RUSTIC  
COMPACT  
BAR

\* All bars are shown with white acrylic panels. There are 800+ custom panel options available including LED lighting, wood laminates, and custom printing for branding



## SPACE- SAVING

All of our portable bars fold quickly and easily, saving you valuable storage space.



## FOLD & ROLL GALLERY





## CUSTOMIZABLE MODULAR PORTABLE BARS



# FLASH BAR™

## MODULAR SYSTEMS

The Flash Bar Modular System is a product of The Portable Company. The Flash Bar is a modular and brandable bar system.

It's customizable design allows you to pick and change the size, shape, look, and accessories to create a unique serving experience.

## PICK YOUR SHAPE

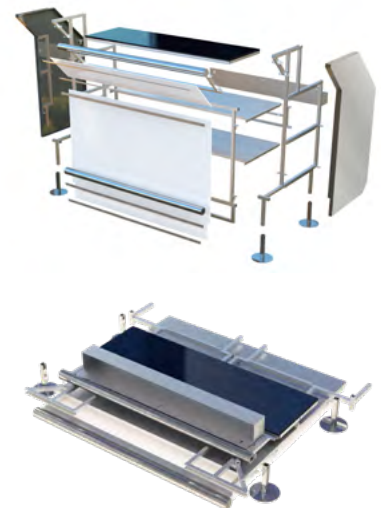
Build custom bar shapes



by mixing and matching 6 different shaped segments



transport the bar by breaking them down into smaller pieces in minutes



\* Matching Back Bars are available too

## CHOOSE THE INTERIOR

Create your own use with the available upgrades:

Sinks • Ice Storage • Speed Rails • Adjustable Shelving



\* Upgrade the Flash Bar with a draft system by adding a Jockey Box

## DESIGN THE LOOK

Options vary for indoor and outdoor use



## ABOUT US

A E International began in 2008 with a bold statement: we can make this better. Since then we've used our design expertise to bring good-looking, high-quality, portable products to market. Our podiums, stands, and bars provide best practice efficiency that makes our products as fun to use as they are stylish. Our companies, The Portable Bar Company, The Valet Spot, The Security Station, and The Hostess Station offer base options with best in class features. Custom options let buyers create unique models to match decor and branding.

To learn more about our companies visit [aeinternationalgroup.com](http://aeinternationalgroup.com).

## OUR TEAM



## LOCATION

### **Our offices are located at:**

3990 Old Town Ave.  
Suite C207  
San Diego CA 92110

### **Products are housed at and originate from:**

2490 S. Santa Fe  
Unit B  
Vista CA 92084

## CONTACT US

**Email:** [info@aeinternationalgroup.com](mailto:info@aeinternationalgroup.com)

**Phone:** 866-853-7898